



Automating Testing Using Windows Virtual PC



Guy Smith-Ferrier

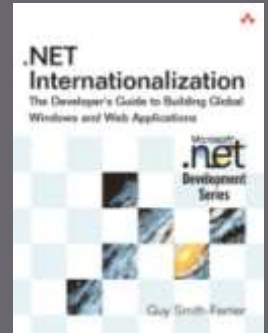
guy@guysmithferrier.com

Blog: <http://www.guysmithferrier.com>

About...

▣ Author of .NET Internationalization

- Visit <http://www.dotneti18n.com> to download the complete source code



▣ The .NET Developer Network

- <http://www.dotnetdevnet.com>
- Free user group for .NET developers, architects and IT Pros based in Bristol



▣ DDD South West 2

- <http://www.dddsouthwest.com>
- Saturday 5th June 2010
- Call For Speakers soon



What's This Session About ?

- ▣ What's in:-
 - Windows Virtual PC
 - Windows Virtual PC COM API
 - C#
- ▣ What's not in:-
 - Virtual PC 2007, Virtual Server, Hyper-V
 - VMWare, Virtual Box etc.
 - Visual Studio 2010 Team System Lab Management
 - VBScript
 - PowerShell

The Goal

- ▣ To automate a virtual machine to:-
 - Start up
 - Log in
 - Run unit tests
 - Shut down

Information Resources (1 of 2)

- ▣ Download Windows Virtual PC
 - <http://www.microsoft.com/windows/virtual-pc/download.aspx>
- ▣ Windows Virtual PC Home
 - <http://www.microsoft.com/windows/virtual-pc/>
- ▣ Windows Virtual PC Blog
 - http://blogs.technet.com/windows_vpc/
- ▣ Windows Virtual PC Reference
 - [http://msdn.microsoft.com/en-us/library/dd796758\(VS.85\).aspx](http://msdn.microsoft.com/en-us/library/dd796758(VS.85).aspx)

Information Resources (2 of 2)

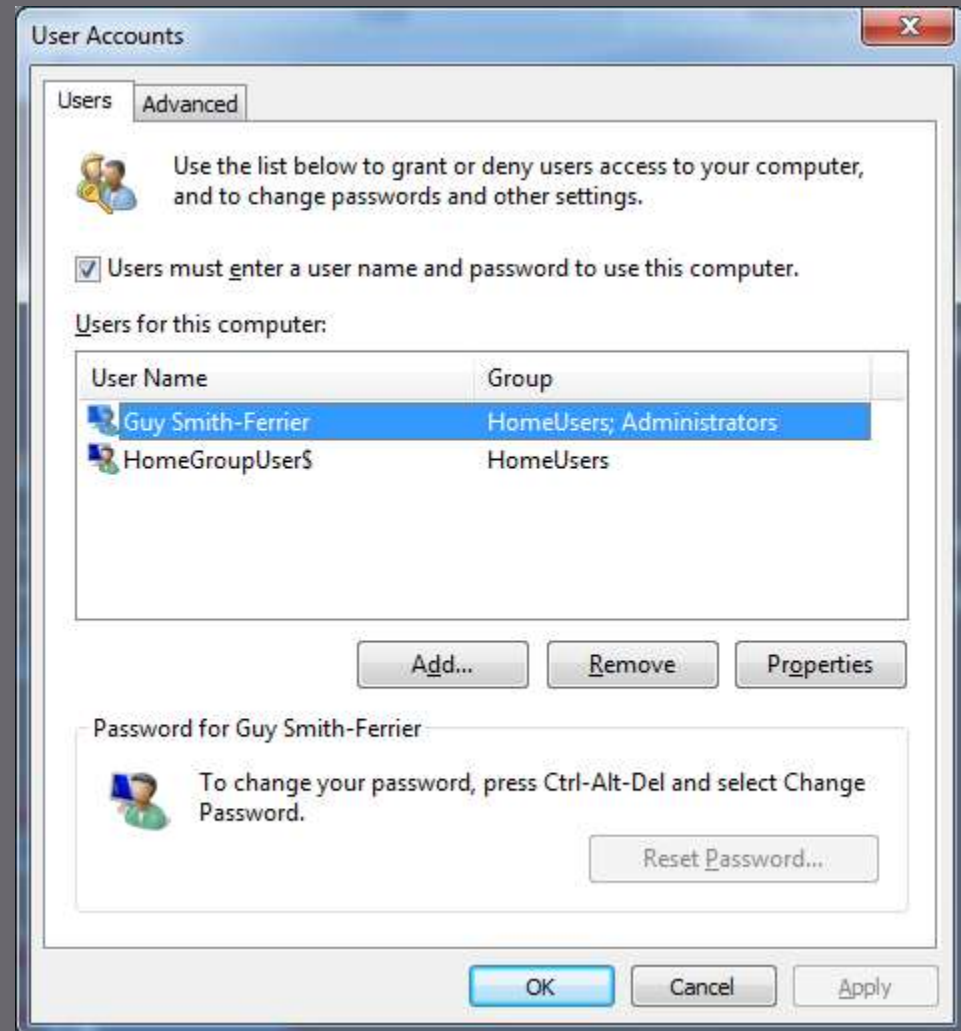
- ▣ TechNet Script Center Gallery
 - <http://gallery.technet.microsoft.com/scriptcenter/en-us/>
- ▣ Professional Microsoft Virtual Server 2005
 - Ben Armstrong, Wrox Press
- ▣ Virtualization For Developers – What, Why, Where with Liam Westley
 - http://video.nunney.me.uk/ddd7/Virtualisation_for_Developers_What_Why_Where.wmv

Demo

Automating Windows Virtual
PC Using The COM API

Setting Up Automatic Login

- In Windows XP, Vista and Windows 7 run the following command:-
 - control userpasswords2
- Uncheck the "Users must enter a user name and password to use this computer" checkbox



Creating And Initializing Virtual Hard Disks Manually

- ❑ From the Start menu right click Computer, select Manage to bring up the Computer Management application
- ❑ Under Storage select Disk Management, right click it and either:-
 - select Create VHD, enter details and click OK or...
 - select Attach VHD and select an existing VHD to attach
- ❑ When the new disk appears right click the "Not Initialized" section and select Initialize Disk
- ❑ Right click the newly initialized disk and select "New Simple Volume...". Click Next 4 times and click Finish.

Creating And Initializing Virtual Hard Disks Automatically

- ▣ Windows Virtual PC has an API method for creating a virtual hard disk but has no way to initialize it
- ▣ To initialize it you need to use DiskPart:-

```
select vdisk file="My Virtual Hard Disk.vhd"  
attach vdisk  
create partition primary  
format fs=ntfs label="New Volume" quick  
assign letter z
```

VHDMount (1 of 2)

- ▣ VHDMount is a Virtual Server stand alone utility for mounting virtual hard drives on the host operating system
 - It provides equivalent VHD functionality to DiskPart for operating systems prior to Windows 7
- ▣ The following command mounts the virtual hard disk as drive Z (without an undo disk)

```
VHDMount /m /f "c:\VirtualServer\My virtual Hard Disk.vhd" z
```

VHDMount (2 of 2)

- ▣ VHDMount works fine with Virtual PC 2007
 - To install Virtual Server's VHDMount for Virtual PC 2007:-

```
msiexec.exe /i "virtual server 2005 install.msi" /qn  
ADDLOCAL=VHDMount
```

- ▣ VHDMount is unable to load all volumes
 - <http://support.microsoft.com/kb/943487>
- ▣ To get more debugging information:-

```
SET VHD_MOUNT_TRACE=1
```

MSBuild Extension Pack

- ▣ MSBuild Extension Pack is a library of msbuild tasks
 - <http://www.codeplex.com/MSBuildExtensionPack>
 - From version 3.5.5.0 (December 2009) it includes Windows Virtual PC msbuild tasks
- ▣ SDC Tasks is a library of msbuild tasks
 - <http://www.codeplex.com/sdctasks>
 - It does not and will not include Windows Virtual PC msbuild tasks
 - It includes Virtual Server 2005 msbuild tasks

Pre-Installed Virtual Hard Disks

- ▣ VHD Test Drive Program
 - <http://technet.microsoft.com/en-us/bb738372.aspx>
- ▣ VHDs with Internet Explorer:-
 - <http://www.microsoft.com/Downloads/details.aspx?FamilyID=21eabb90-958f-4b64-b5f1-73d0a413c8ef&displaylang=en>
 - IE6-XPSP3.exe contains a Windows XP SP3 with IE6 VHD
 - IE7-XPSP3.exe contains a Windows XP SP3 with IE7 VHD
 - IE8-XPSP3.exe contains a Windows XP SP3 with IE8 VHD
 - IE7-VIS1.exe+IE7-VIS2.rar+IE7-VIS3.rar contain a Vista Image with IE7 VHD
 - IE8-VIS1.exe+IE8-VIS2.rar+IE8-VIS3.rar+IE8-VIS4.rar contain a Vista Image with IE8 VHD

Summary

- ▣ The Windows Virtual PC COM API allows you to control virtual machines
 - The issue of logging on is best solved by telling Windows to automatically logon
 - To copy the tests to the virtual machine use either:-
 - ▣ a file share
 - ▣ a virtual hard disk
 - To run the unit tests use either:-
 - ▣ the keyboard to invoke the Run command
 - ▣ a scheduled task using WMI
 - ▣ add a batch file to the Startup menu